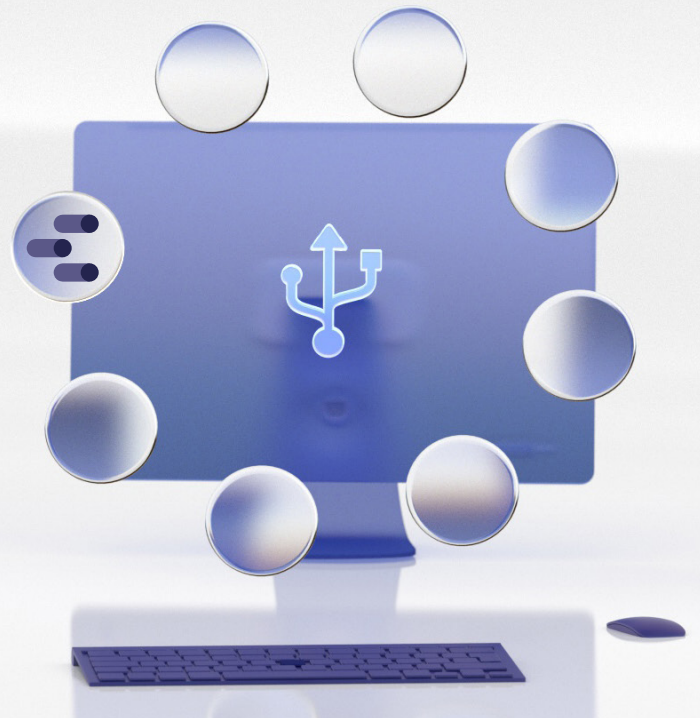


# Siteimprove Connector

## Siteimprove Google Data Studio Connector

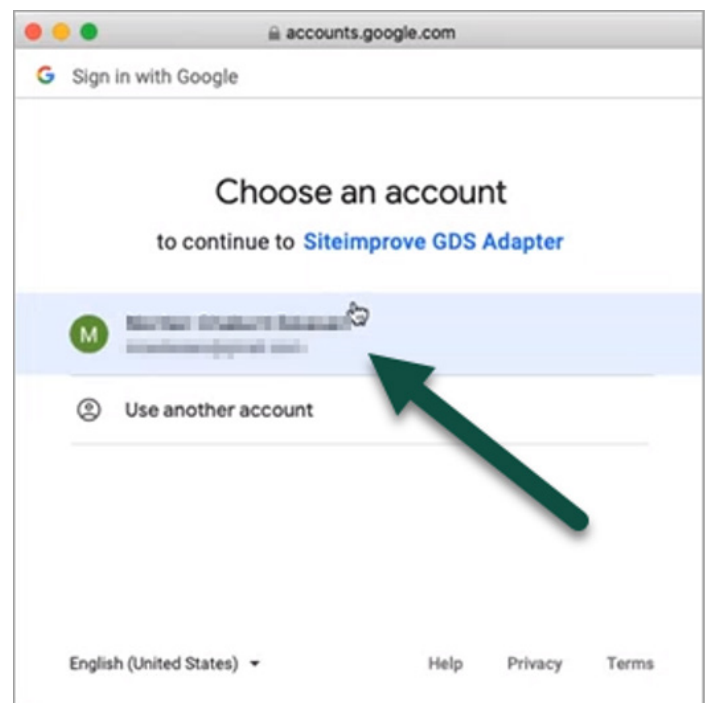


The Siteimprove Google Data Studio Connector allows users to visualize Siteimprove data within Google Data Studio (GDS). The data is obtained via the Siteimprove API, which is available to all Siteimprove customers.

**Note:** You must be a Siteimprove Account Owner or Administrator to set up the integration with Google Data Studio.

### Setting up the GDS connector

1. Use this [Google Data Studio link](#) and follow the instructions.
2. Click the “Authorize” button to follow the authorization flow.
3. Select/log in the Google account you want to connect to.
4. Select “Allow” in the popup window to give Siteimprove access to your account.



Want to know more? [Visit our website](#)

 Siteimprove

5. Provide a Siteimprove API key.
  - The Siteimprove API key should be based on a user with access to the account you want to report on.
  - If you don't already have a Siteimprove API key, you can create one in the Siteimprove platform at: **Integrations > API > API Keys** and click on **"Create API Key"**. See also **"How to connect to the Siteimprove API"**.
6. Select whether you want to see data for all sites in the account, or a subset. If you choose "Selected sites" in the dropdown, you will be able to select specific sites in the next step.
7. Click "Connect" to continue to an overview of the data. Then you will see a list of all the data that we make available to Google data studio.
8. Click "Create Report" in the top right menu to load the default report template.

## Visualizing Siteimprove data in Google Data Studio

To access the data, you'll need to log in to Google Data Studio with your username and the API key. Once logged in and connected to Siteimprove, you'll have the same permissions to the Siteimprove data as if you were logged in to the platform. Note: You can create and manage API keys from the Settings menu in the Siteimprove platform.

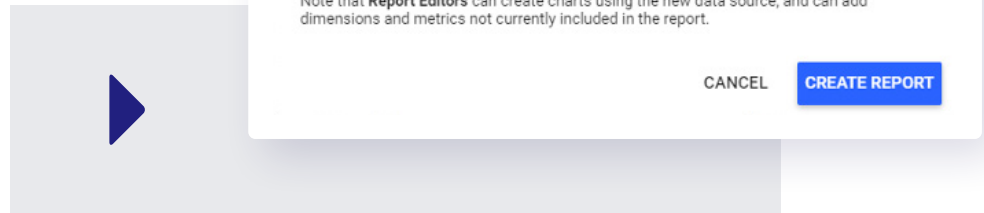
1. Connect to the Siteimprove data in Google Data Studio as described earlier in this article.
2. You will see a list of all the data that Siteimprove make available to GDS. This is the data that is available for you to create reports. You also have options to add extra fields or parameters if required.

Field	Type	Default Aggregation	Description
Accessibility Rule: Confor...	RBC Text	None	
Accessibility Rule: Difficulty	RBC Text	None	
Accessibility Rule: Eleme...	RBC Text	None	
Accessibility Rule: Name	RBC Text	None	



Want to know more? [Visit our website](#)

3. From here you can create your reports by clicking on the "Create a report" button in the top menu bar.
4. Then click the "Create report" button on the popup modal.



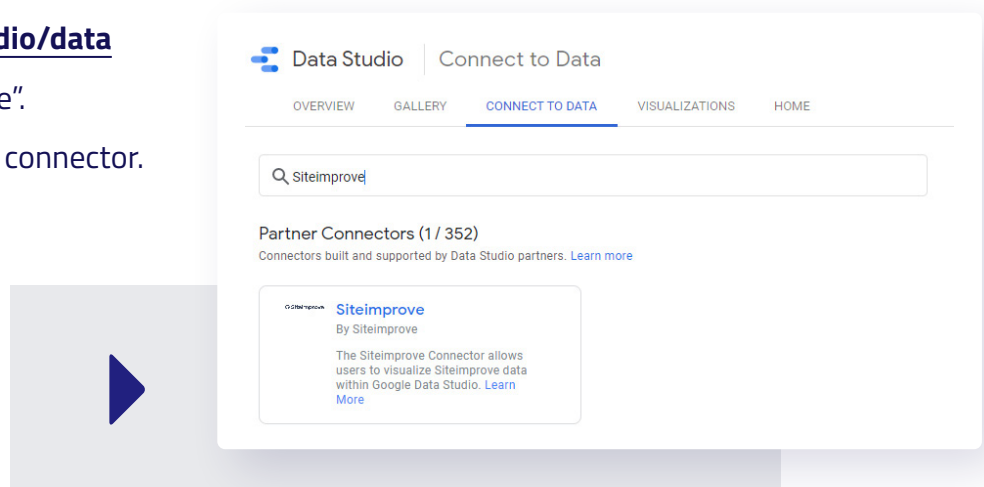
5. You will be presented with a default report template configured by Siteimprove. From here you can create your own tables and graphs using the Siteimprove data (Dimensions and Metrics) available to the right of the dashboard. To learn more about using the data in GDS see: [Data Studio Help - Model your data](#).

Once you have completed the connection process, you'll find Siteimprove listed as a partner connector under Google Connectors in GDS. Another useful resource is the article "[Creating reports in Google Data Studio](#)".

## Using Siteimprove data in GDS after setup

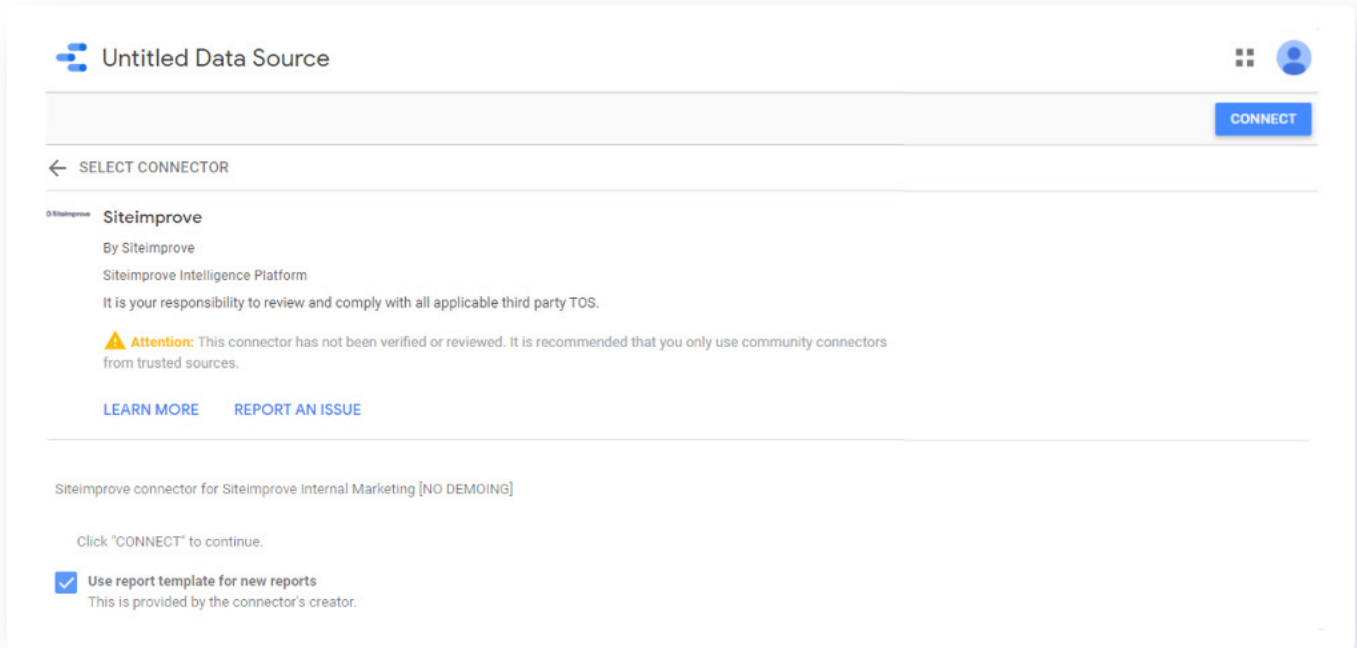
After the connection is configured a user can access google Siteimprove data via Google Data studio as follows:

1. Go to [Google Data studio/data](#)
2. Search for "Siteimprove".
3. Select the Siteimprove connector.



Want to know more? [Visit our website](#)

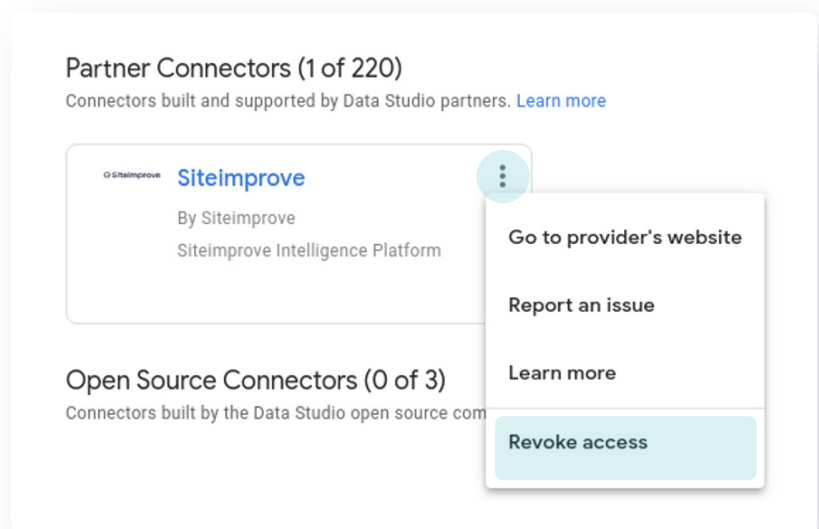
4. Click on “connect” to start using Siteimprove data in GDS.



## Switching accounts

The Siteimprove credentials provided are now tied to your instance of the Siteimprove connector.

If you want to switch credentials to see data from a different account, you need to navigate to [Google Data Studio](#), find the “Siteimprove” connector, click the three dots in the top right corner of the card and choose “Revoke access”.



Then you can follow the [connector setup link](#) and go through the authorization and authentication flow again as described above.

[Request a demo](#)

Achieve your **digital potential**

 **Siteimprove**

Siteimprove is a SaaS solution that helps organizations achieve their digital potential by empowering teams with actionable insights to deliver a superior website experience and drive growth. Siteimprove has 550 employees across 13 offices, helping over 7,200 customers globally. We're part of the World Wide Web Consortium (W3C), the leading group developing international web standards, and an exclusive Adobe Premier partner. Learn more at [siteimprove.com](https://www.siteimprove.com).